



Office space for *sublease*

Two Union Square

601 Union Street, Seattle, WA

Space highlights

- Floor 11 - two suites available for a total of up to 20,501 RSF
- Suite 1100 - 9,637 RSF
- Suite 1150 - 10,864 RSF
- \$42.00 - \$45.00 fully serviced
- Flexible term; master lease through December 2027
- Strong credit sublandlord
- Available tenant improvement allowance
- Furniture available

Building highlights

- Newly renovated lobby
- Excellent access to I-5 and I-90
- On-site fitness center and shower facilities
- Conference and training facilities
- Restaurants, sundries shop, and florist



Lease inquiries Rob Nielsen Larry Almeleh
206.607.1722 206.521.2674
rob.nielsen@am.jll.com larry.almeleh@am.jll.com

Jones Lang LaSalle Brokerage, Inc.

© 2020 Jones Lang LaSalle IP, Inc. All rights reserved.

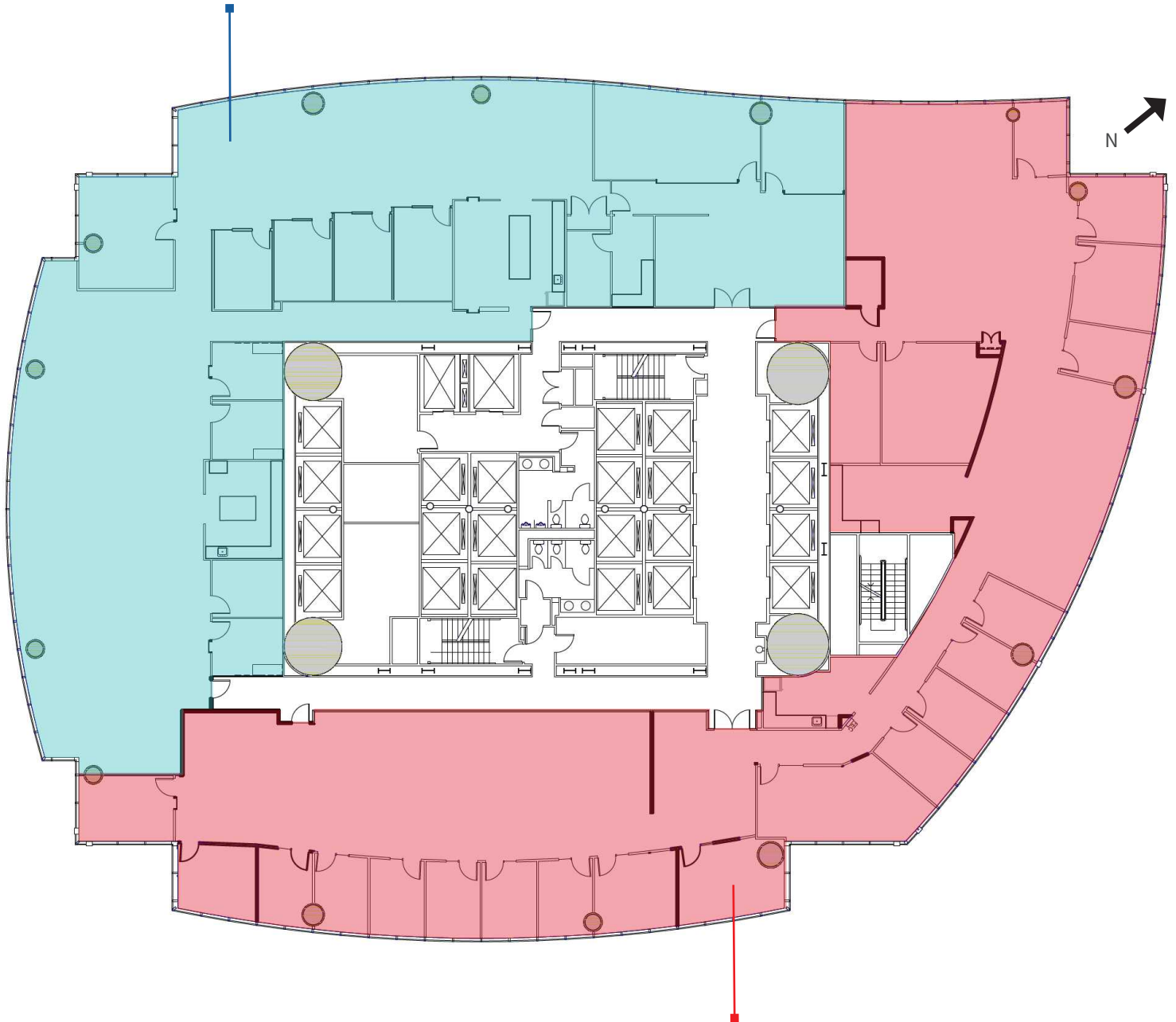
All information contained herein is from sources deemed reliable; however, no representation or warranty is made to the accuracy thereof.

Two Union Square

601 Union Street, Seattle, WA

up to 20,501 RSF combined

Suite 1100 - 9,637 RSF



Suite 1150 - 10,864 RSF

Lease inquiries Rob Nielsen Larry Almeleh
206.607.1722 206.521.2674
rob.nielsen@am.jll.com larry.almeleh@am.jll.com

Jones Lang LaSalle Brokerage, Inc.

© 2020 Jones Lang LaSalle IP, Inc. All rights reserved.

All information contained herein is from sources deemed reliable; however, no representation or warranty is made to the accuracy thereof.





Office space for *sublease*

Two Union Square

601 Union Street, Seattle, WA

Space highlights

- Suite 1400 - 6,646 RSF
- \$42.00 - \$45.00 fully serviced
- Flexible term; master lease through December 2027
- Strong credit sublandlord
- Available tenant improvement allowance
- Furniture available

Building highlights

- Newly renovated lobby
- Excellent access to I-5 and I-90
- On-site fitness center and shower facilities
- Conference and training facilities
- Restaurants, sundries shop, and florist



Lease inquiries Rob Nielsen Larry Almeleh
206.607.1722 206.521.2674
rob.nielsen@am.jll.com larry.almeleh@am.jll.com

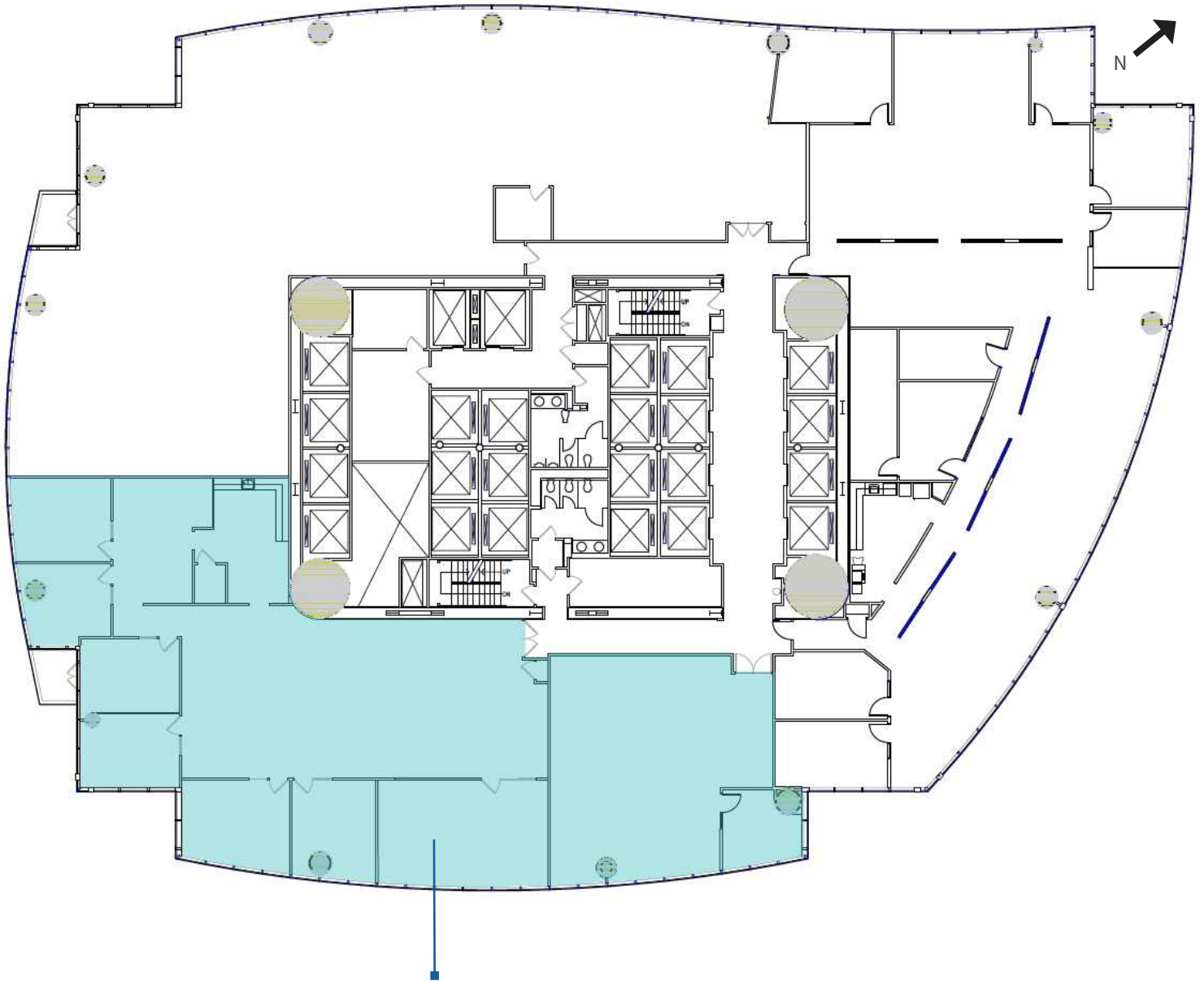
Jones Lang LaSalle Brokerage, Inc.

© 2020 Jones Lang LaSalle IP, Inc. All rights reserved.

All information contained herein is from sources deemed reliable; however, no representation or warranty is made to the accuracy thereof.

Two Union Square

601 Union Street, Seattle, WA



Suite 1400 - 6,646 RSF

Lease inquiries Rob Nielsen Larry Almeleh
206.607.1722 206.521.2674
rob.nielsen@am.jll.com larry.almeleh@am.jll.com

Jones Lang LaSalle Brokerage, Inc.

© 2020 Jones Lang LaSalle IP, Inc. All rights reserved.

All information contained herein is from sources deemed reliable; however, no representation or warranty is made to the accuracy thereof.





Office space for *sublease*

Two Union Square

601 Union Street, Seattle, WA

Space highlights

- Floor 17 - two suites available for a total of up to 14,103 RSF
- Suite 1700 - 4,875 RSF
- Suite 1750 - 9,228 RSF
- \$43.00 - \$45.00 fully serviced
- Flexible term; master lease through December 2027
- Strong credit sublandlord
- Available tenant improvement allowance
- Furniture available

Building highlights

- Newly renovated lobby
- Excellent access to I-5 and I-90
- On-site fitness center and shower facilities
- Conference and training facilities
- Restaurants, sundries shop, and florist



Lease inquiries Rob Nielsen Larry Almeleh
206.607.1722 206.521.2674
rob.nielsen@am.jll.com larry.almeleh@am.jll.com

Jones Lang LaSalle Brokerage, Inc.

© 2020 Jones Lang LaSalle IP, Inc. All rights reserved.

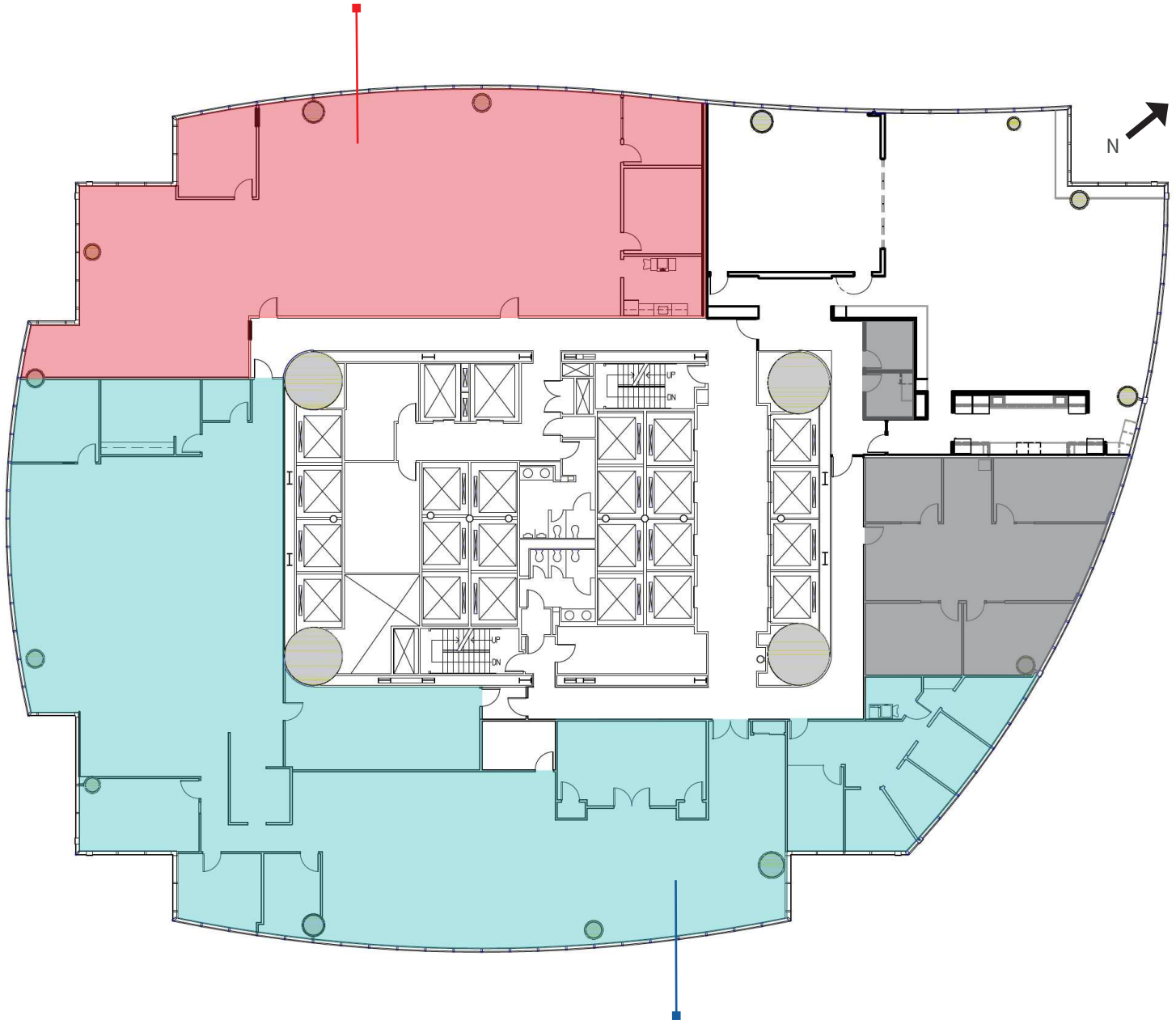
All information contained herein is from sources deemed reliable; however, no representation or warranty is made to the accuracy thereof.

Two Union Square

601 Union Street, Seattle, WA

up to 14,103 RSF combined

Suite 1700 - 4,875 RSF



Suite 1750 - 9,228 RSF

Lease inquiries Rob Nielsen Larry Almeleh
206.607.1722 206.521.2674
rob.nielsen@am.jll.com larry.almeleh@am.jll.com

Jones Lang LaSalle Brokerage, Inc.

© 2020 Jones Lang LaSalle IP, Inc. All rights reserved.

All information contained herein is from sources deemed reliable; however, no representation or warranty is made to the accuracy thereof.





Office space for *sublease*

Two Union Square

601 Union Street, Seattle, WA

Space highlights

- Suite 1875 - 8,715 RSF
- \$44.00 - \$45.00 fully serviced
- Flexible term; master lease through December 2027
- Strong credit sublandlord
- Available tenant improvement allowance
- Furniture available

Building highlights

- Newly renovated lobby
- Excellent access to I-5 and I-90
- On-site fitness center and shower facilities
- Conference and training facilities
- Restaurants, sundries shop, and florist



Lease inquiries Rob Nielsen Larry Almeleh
206.607.1722 206.521.2674
rob.nielsen@am.jll.com larry.almeleh@am.jll.com

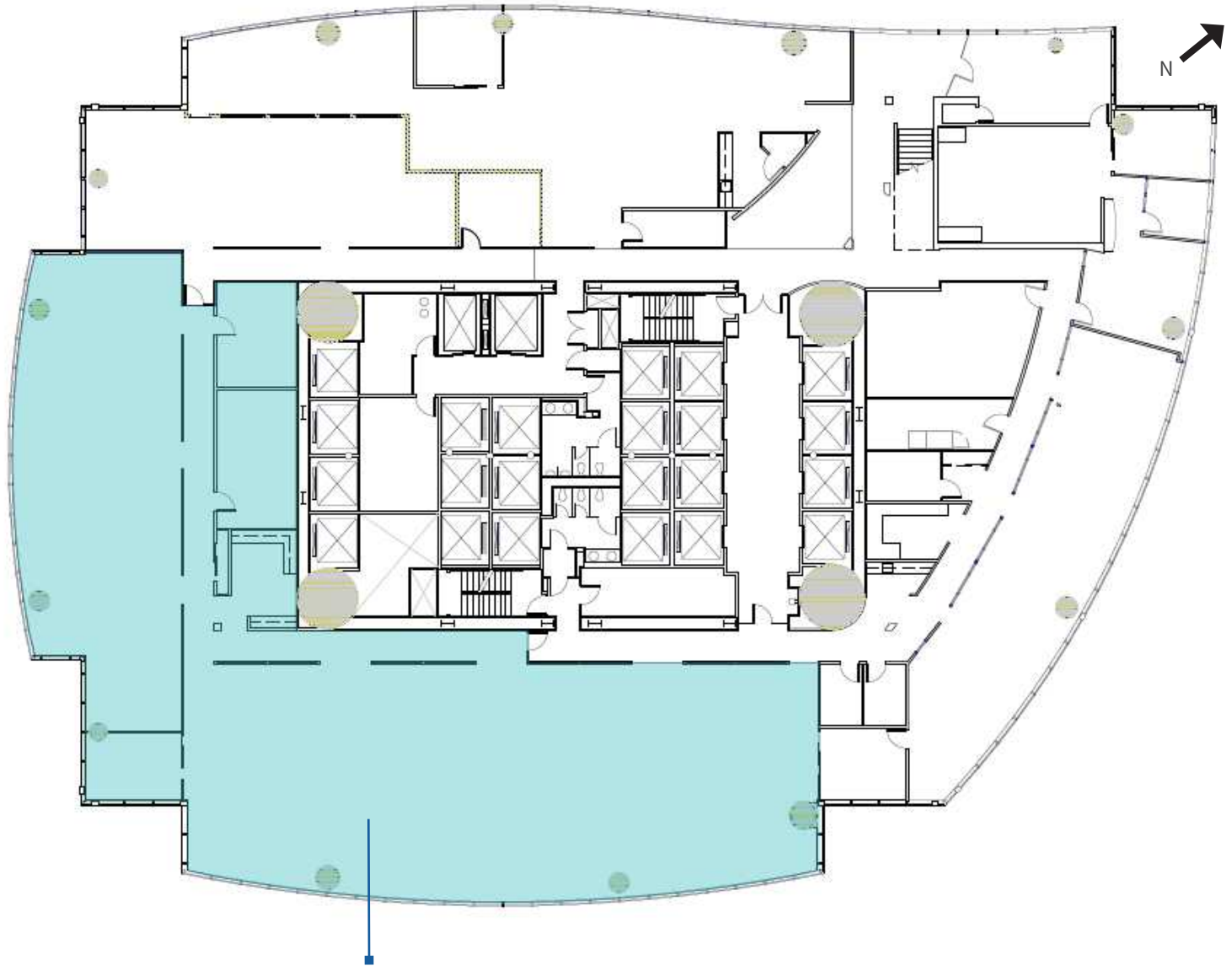
Jones Lang LaSalle Brokerage, Inc.

© 2020 Jones Lang LaSalle IP, Inc. All rights reserved.

All information contained herein is from sources deemed reliable; however, no representation or warranty is made to the accuracy thereof.

Two Union Square

601 Union Street, Seattle, WA



Suite 1875 - 8,715 RSF

Lease inquiries Rob Nielsen Larry Almeleh
206.607.1722 206.521.2674
rob.nielsen@am.jll.com larry.almeleh@am.jll.com

Jones Lang LaSalle Brokerage, Inc.

© 2020 Jones Lang LaSalle IP, Inc. All rights reserved.

All information contained herein is from sources deemed reliable; however, no representation or warranty is made to the accuracy thereof.

